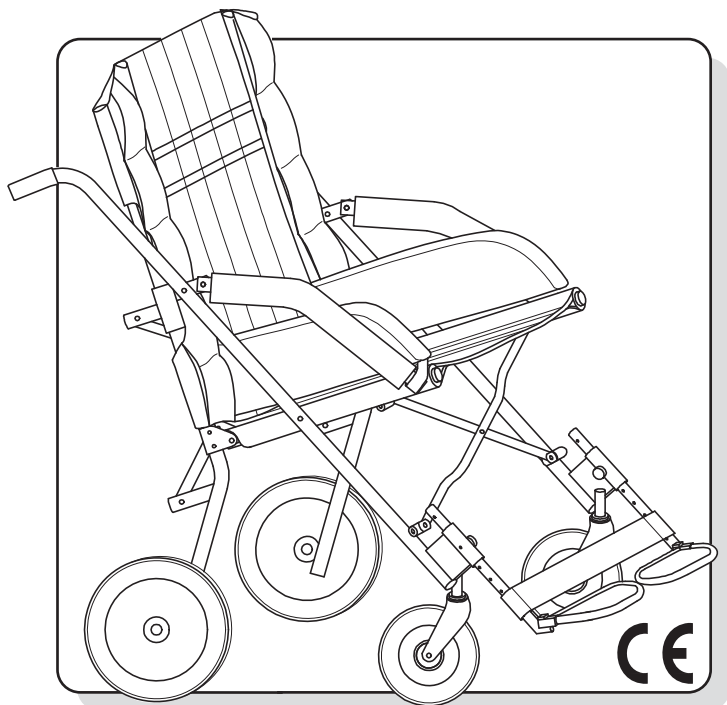


CLIP4 PUSHCHAIR

FOLDABLE LIKE AN UMBRELLA



USE AND MAINTENANCE HANDBOOK

ORMESA®

Thank you for choosing **CLIP 4 pushchair**, from ORMESA s.r.l.
The CLIP 4 combines style and ergonomics without compromising on safety.

ORMESA recommends that you read this manual carefully to fully understand its contents. In addition to helping you become familiar with **CLIP** quickly, it also contains practical tips for making the best use of it safely and keeping it in good working order.

If, after reading it, you still have questions, contact your retailer, who will be happy to help you, or call ORMESA s.r.l. directly at +39 0742 22927, send a fax to +39 0742 22637 or send an e-mail to: **info@ormesa.com**

Luigi Menichini
Managing Director

**TABLE OF CONTENTS**

WARNINGS	3
GUARANTEE	5
STORAGE AND TRANSPORT INSTRUCTIONS.....	5
SOME EXAMPLES OF WHAT NOT TO DO WITH CLIP-4.....	6
LABELS AND PLATES.....	6
HOW TO TILT THE PUSHCHAIR TO CLIMB UP PAVEMENTS.....	7
BRAKING THE PUSHCHAIR.....	8
TECHNICAL FEATURES	9
INITIAL PREPARATION.....	10
PACKING INFORMATION.....	10
OPENING THE PUSHCHAIR	11
HOW CLIP-4 WORKS AND HOW TO USE IT	13
FOLDING the PUSHCHAIR for TRANSPORT	13
RECLINING THE BACKREST	15
ADJUSTING the HEIGHT of the FOOTRESTS.....	16
MOUNTING ACCESSORIES.....	17
FRONT WHEEL DIRECTION LOCKS 812	17
LEG DIVIDING INGUINAL STRAPS 817	18
THERMIC COVER 818	18
CANOPY 819	19
RAIN COVER 825	20
FOOTSTRAPS 827	21
PADDED BODY SIDE SUPPORTS 816	21
ADJUSTABLE HEAD SIDE SUPPORTS 835	22
VEST HARNESS 853	22
5-POINT HARNESS 906	23
5-POINT VEST HARNESS 903	25
45° SEAT BELT 894	27
SEAT BELT 828	28
TAKING OFF AND FIXING THE UPHOLSTERY	29
MAINTENANCE, CLEANING AND DISINFECTION	31
CUSTOMER SERVICE AND SPARE PARTS.....	32
CONDITIONS FOR DURABILITY, REUSE AND REASSIGNMENT TO A NEW USER.....	33

**WARNINGS**

- **CAREFULLY READ AND UNDERSTAND THE INSTRUCTIONS IN THIS MANUAL BEFORE USING THE DEVICE BECAUSE THEY HAVE BEEN WRITTEN WITH THE USER'S SAFETY IN MIND** and they will help the carer use the product safely and keep it in good working order. The Use and Maintenance Manual is an integral part of the product and must be carefully preserved for future reference.
- **THE MANUAL IS INTENDED FOR TECHNICALLY QUALIFIED RETAILERS AND USERS AND THEIR ASSISTANTS**; it provides instructions for using the product correctly and must be supplemented by adequate knowledge of the rehabilitation program for which it has been prescribed
- the manual reflects the technical state of the product at the time it was sold. **ORMESA RESERVES THE RIGHT TO MAKE ANY CHANGES TO THE PRODUCT OR MANUAL SUGGESTED BY EXPERIENCE, TECHNICAL CONSIDERATIONS OR REGULATORY DEVELOPMENTS** without any obligation to update its previous production and relevant manuals.
- **THE DOCTOR MUST CHECK THE USE OF CLIP AND ITS ACCESSORIES** in conformity with current laws, regulations and standards.
- **THE PUSHCHAIR IS INTENDED FOR USE BY PEOPLE WHOSE SIZE AND WEIGHT** fall within the range of the "Technical Features" on page 9,
- **CLIP MUST BE MANOEUVRED BY PEOPLE WITH THE HEIGHT AND STRENGTH TO CONTROL ITS MOVEMENTS.**
- **CLIP CAN ONLY BE USED BY PEOPLE** who have read the rules and instructions in this manual.
- **BEFORE EACH USE ALWAYS CHECK** that the brakes are working, the wheels are not excessively worn and that the frame, backrest and footrest are locked.
- **MAKE SURE THAT ALL ADJUSTABLE PARTS ARE LOCKED** before each use.
- **To climb up pavements, CLIMB FACING FORWARD AND DESCEND FACING BACKWARD, TILTING THE PUSHCHAIR ON ITS REAR WHEELS** (see page 7).
- **The 812 direction locks on the front wheels were exclusively designed for using the stroller on rough terrain**: in all other cases, they must be disengaged to avoid difficulty in manoeuvring the device
- **WHEN PAUSING, ALWAYS LOCKS BOTH BRAKES**, even on level ground. (see page 8)
- **ALWAYS LOCK THE BRAKES BEFORE MAKING ANY TYPE ADJUSTMENT** (see page 8)
- **CLEAN THE PUSHCHAIR AND UPHOLSTERY** following the instructions shown in the "MAINTENANCE" chapter on page 31-32.
- **The upholsteries are not fire proof**. For this reason Clip must be kept far from fires, cigarettes and flames.
- **Keeping the cushion and child clean will prevent bedsores.**

CLIP IS A MECHANICAL MEDICAL DEVICE:

Perform **REGULAR MAINTENANCE** and **CLEANING** following the instructions shown in the "Maintenance" chapter on page 31-32 and **HAVE THE DEVICE INSPECTED AT THE INTERVALS INDICATED** to **VERIFY** that it is **WORKING PROPERLY** and in **GOOD CONDITION**, otherwise warranty will fail and C€ marking will lapse



PRODUCT REPAIRS other than the regular maintenance shown on page 31-32 of the manual must be **ONLY MADE** by a **SPECIALIZED SERVICE CENTER** in the maintenance of mechanical aids for disables, otherwise warranty and C€ marking will be voided



Any **CHANGES** in the product and the **REPLACEMENT WITHOUT ORIGINAL PARTS OR COMPONENTS ARE NOT AUTHORIZED**. REFER ONLY TO ORMESA, otherwise warranty and C€ marking will be voided



In case of **DOUBT** about the **SAFETY** of the product or **DAMAGE** to parts or components, you are urged to **IMMEDIATELY DISCONTINUE USE** and **CONTACT a SPECIALIZED SERVICE CENTER** in the maintenance of mechanical aids for disables, or directly **ORMESA**.

**GUARANTEE**

- **ORMESA s.r.l. guarantees the product for 2 years:** in the case of problems, contact the retailer where you purchased it. Always demand original replacement parts or you will risk voiding the warranty.
- **ORMESA will not be liable for damage in the following cases:**
 - *use by an unsuitable person;*
 - *incorrect assembly of parts or accessories;*
 - *unauthorized modifications or service;*
 - *use of other than original replacement parts and parts subject to wear (seat and backrest, wheels, etc);*
 - *improper use (such as, transporting objects or loads larger or heavier than those shown in the instruction handbook);*
 - *damage caused by incorrect use and lack of regular maintenance, as shown in the instruction handbook;*
 - *exceptional events;*
 - *failure to follow the instructions in this manual.*

THE GUARANTEE DOES NOT COVER WEAR PARTS, WHICH ARE SUBJECT TO WEAR AND TEAR, SUCH AS THE UPHOLSTERIES AND THE WHEELS.

**STORAGE AND TRANSPORT INSTRUCTIONS**

THE DEVICE MUST BE STORED AND PACKED using the Ormesa original packaging materials, unless the guarantee will be voided

- Once unpacked, **THE TRANSPORT OF THE DEVICE** must be done by **ANCHORING ADEQUATELY** it to the vehicle
- When travelling by plane, or in the car, **DO NOT SUBJECT THE FOLDED FRAME TO LOADS THAT**, especially with road bumps, **COULD DAMAGE ITS STRUCTURE**

THE DEVICE MUST BE PARKED / STORED IN CLOSED AND DRY PLACES

- **THE OPERATING ENVIRONMENT HAS NO PARTICULAR INFLUENCE ON THE DEVICE UNLESS IT IS USED INCORRECTLY**, such as by leaving it parked for a long time in direct sunlight or exposed to bad weather such as rain, or in **MARINE ENVIRONMENTS**, where the salt air could corrode the paint and sliding parts. **IN THIS CASE, WE RECOMMEND CAREFULLY CLEANING AND DRYING THE FRAME FOLLOWING THE INSTRUCTIONS SHOWN IN THE “MAINTENANCE, CLEANING AND DISINFECTION” CHAPTER ON PAGES 31 AND THE WARNINGS ⚠ ON PAGE 32**

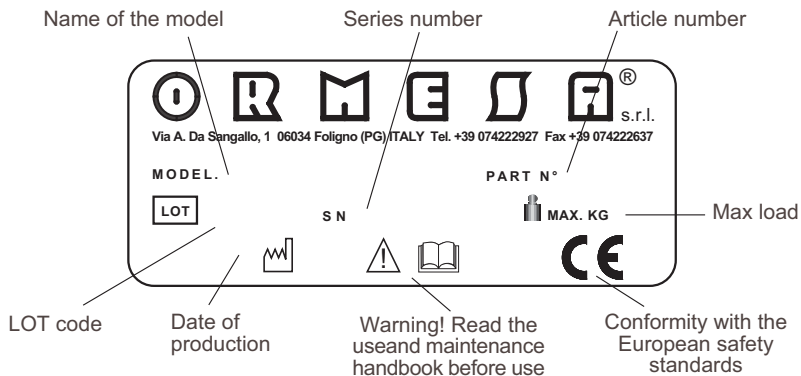


SOME EXAMPLES OF WHAT NOT TO DO WITH CLIP-4

DO NOT CARRY THE CHILD OVER ROUGH OR STEEP SURFACES OR STAIRS

- DO NOT ALLOW CHILDREN TO USE THE PUSHCHAIR OR EVEN PLAY WITH IT
- NEVER LEAVE THE CHILD IN THE PUSHCHAIR UNATTENDED
- NEVER STOP CLIP-4 ON SLOPING GROUND
- DO NOT LET ANYONE CLIMB ON THE FOOTREST OR STAND ON THE BACK
- DO NOT LIFT THE PUSHCHAIR BY THE LEG SUPPORT FRAME OR FOOTREST TO CLIMB OVER OBSTACLES
- DO NOT USE CLIP-4 TO CLIMB OR DESCEND STAIRS: ITS STRUCTURE WAS NOT DESIGNED FOR THIS PURPOSE
- NEVER LEAVE THE PUSHCHAIR PARKED FOR A LONG TIME IN DIRECT SUNLIGHT OR NEAR SOURCES OF HEAT: THIS WILL AVOID OVERHEATING THE DEVICE AND DISCOLOURING THE UPHOLSTERY
- DO NOT USE THE PRODUCT IF PARTS ARE MISSING OR DAMAGED. INSIST THAT ONLY ORIGINAL REPLACEMENT PARTS ARE USED BECAUSE ANY OTHER TYPE WILL VOID THE WARRANTY
- DO NOT CLIMB PAVEMENTS OR STEPS WITH JUST THE PUSHCHAIR'S SIDE WHEELS (FRONT AND BACK), BECAUSE THE PUSHCHAIR COULD TIP OVER (SEE FIG. ON PAGE 7)

LABELS AND PLATES

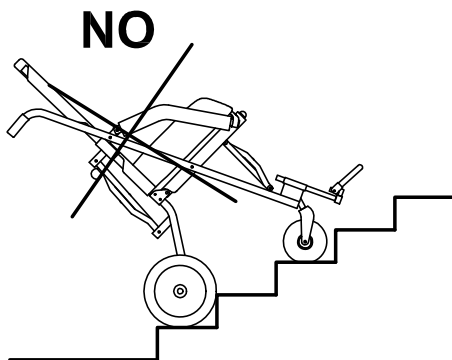
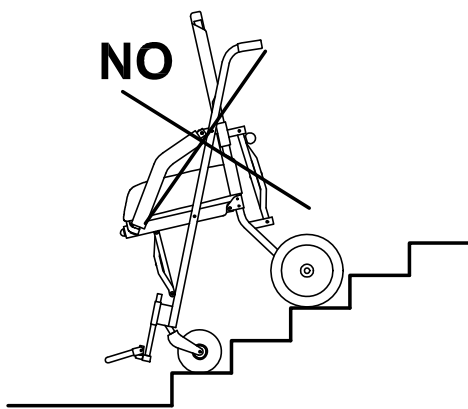
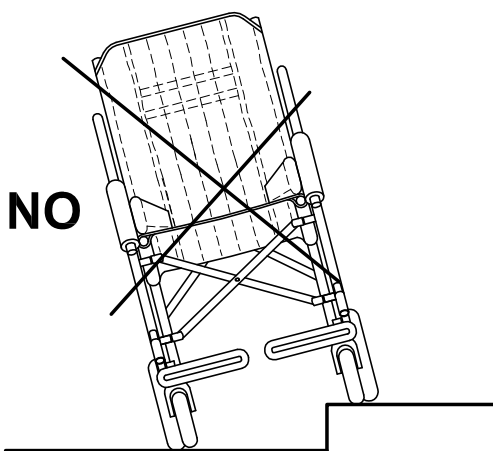
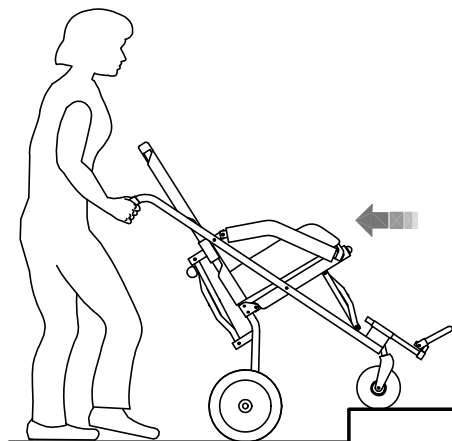
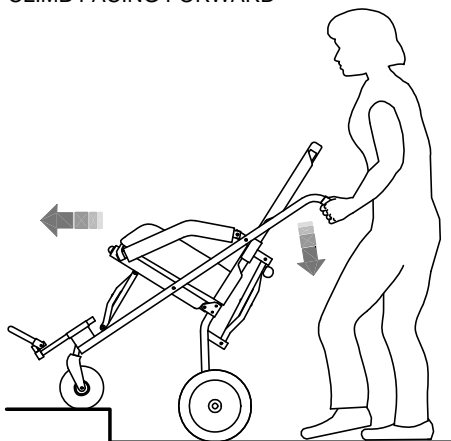


THE **CE** MARK CERTIFIES THAT THE **CLIP-4** PUSHCHAIR CONFORMS TO THE EUROPEAN UNION'S SAFETY REQUIREMENTS AND, IN PARTICULAR, DIRECTIVE 2007/47/EC REGARDING "MEDICAL DEVICES".

HOW TO TILT THE PUSHCHAIR TO CLIMB UP PAVEMENTS

CLIMB FACING FORWARD

DESCEND FACING BACKWARD

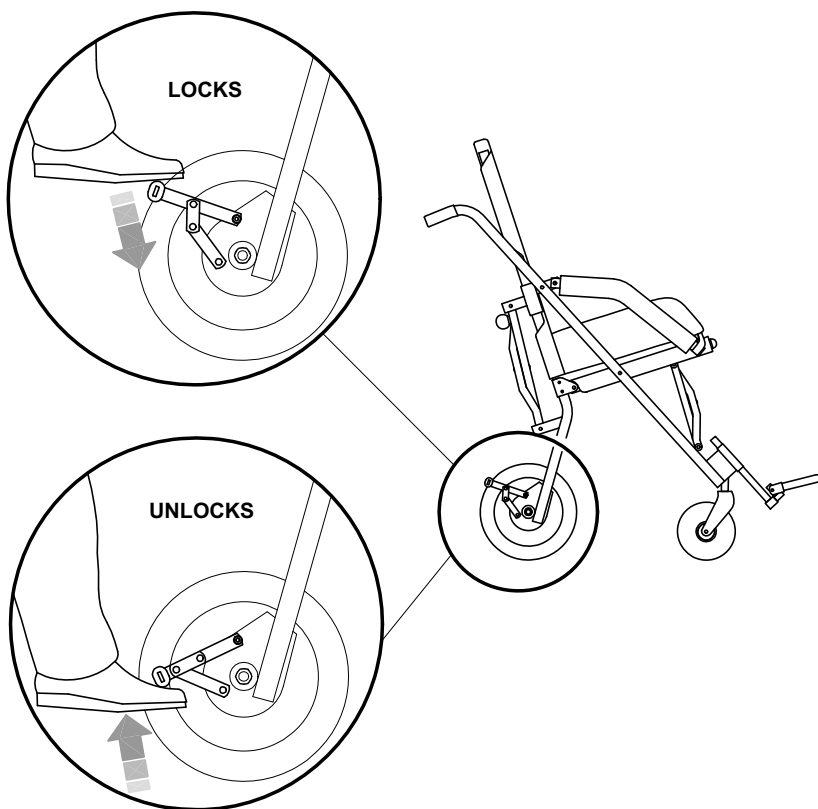


BRAKING THE PUSHCHAIR



ATTENTION!

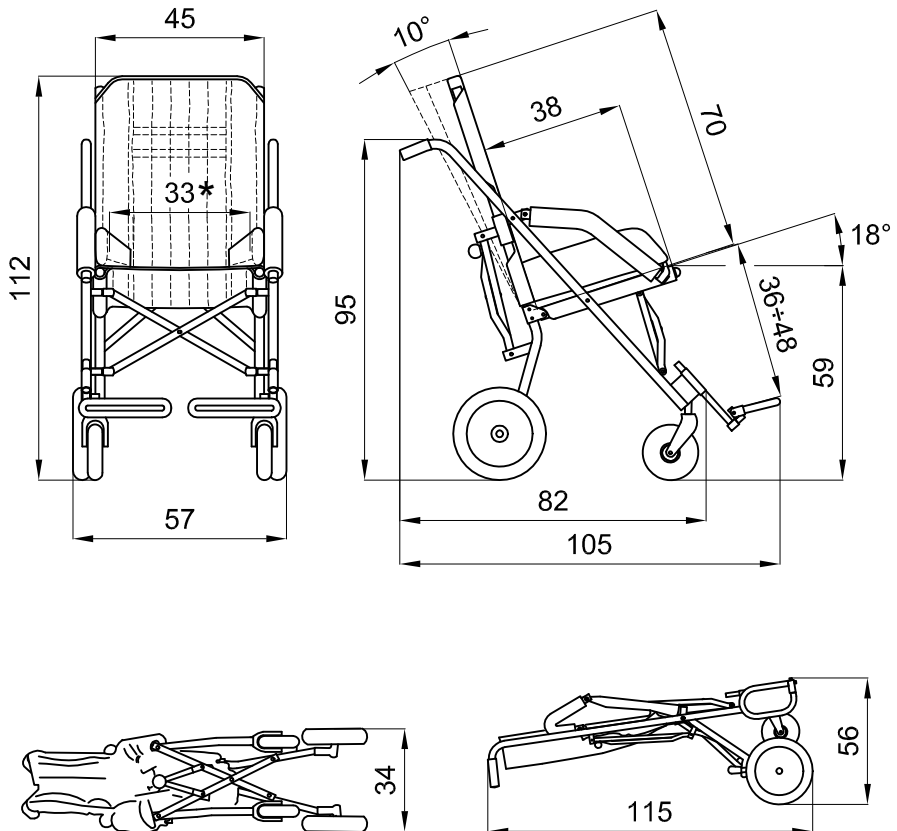
YOU MUST ENGAGE THE BRAKES
BEFORE PLACING OR REMOVING
THE CHILD FROM THE PUSHCHAIR
OR MAKING ANY ADJUSTMENTS.



TECHNICAL FEATURES

- **Frame:** folds like an umbrella, in aluminium painted with non-toxic epoxy paint
- **Backrest:** semi-rigid, reclines in 3 positions with zippers
- **Seat bottom:** semi-rigid
- **Upholstery:** removable for washing with padding and removable aluminium reinforcement ribs; slots for attaching accessories
- **Footrests:** removable, height adjustable
- **Leg support band**
- **Solid wheels :** *front* 17.5-cm, swivelling; *rear* 25-cm, sliding on ball bearings with independent drum brakes

Measures in cm and weights in kg
 HYPHEN-SEPARATED NUMBERS
 INDICATE THE MINIMUM AND MAXIMUM
 RANGE OF ADJUSTMENT



CLIP 4

WEIGHT OF THE AID KG. 12,5

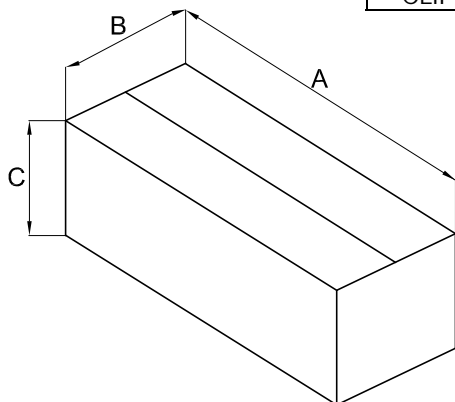
MAX. LOAD KG. 76

* SEAT WIDTH WITHOUT PADDED SIDES 45 CM.

INITIAL PREPARATION

PACKING INFORMATION

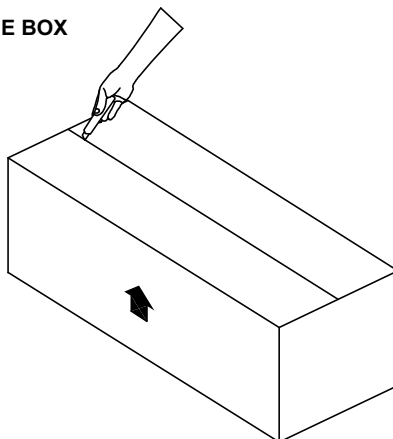
pushchair	A cm	B cm	C cm	VOLUME m3	WEIGHT kg
CLIP 4	118	63	40	0,297	15



HOW TO REMOVE THE PUSHCHAIR FROM THE BOX

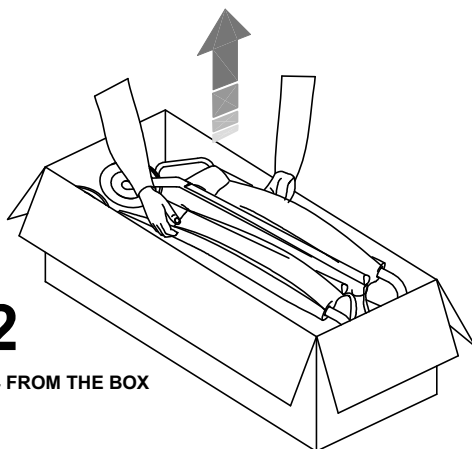
ATTENTION!
CUT WITHOUT PRESSING TOO HARD
SO AS NOT TO DAMAGE
THE CONTENTS OF THE BOX

1



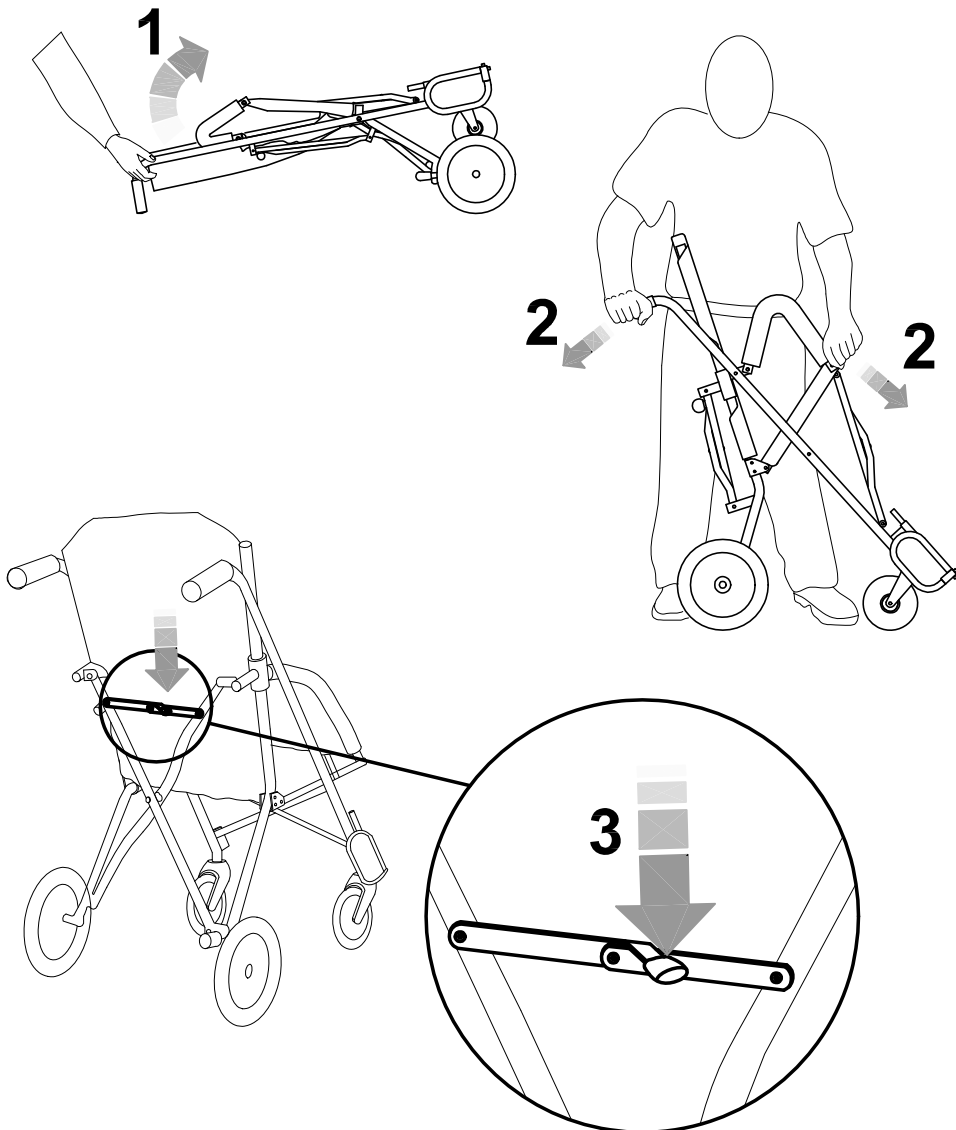
2

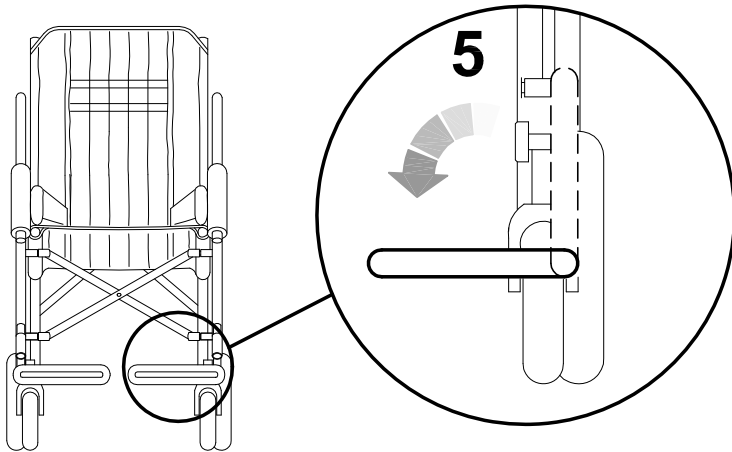
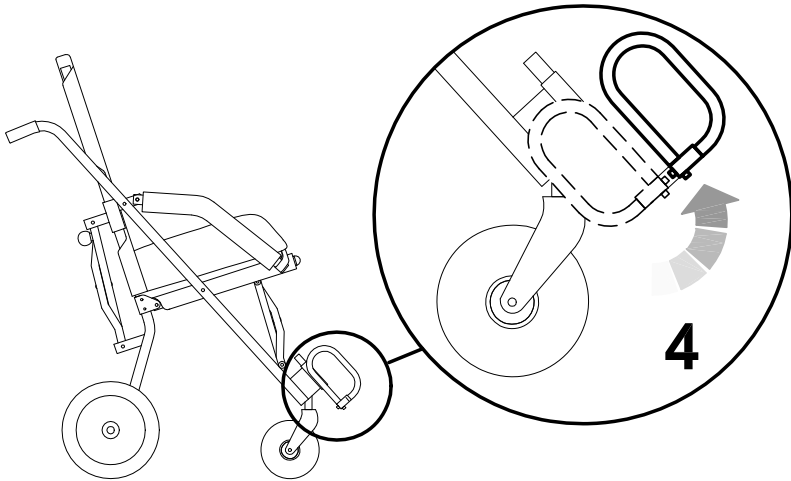
REMOVE CLIP 4 FROM THE BOX



OPENING THE PUSHCHAIR

1. RAISE THE PUSHCHAIR TO A VERTICAL POSITION
2. OPEN THE PUSHCHAIR
3. LOCK THE REAR TENSIONERS BY PUSHING THEM TO THE END OF THEIR TRAVEL
4. OPEN THE FOOTRESTS

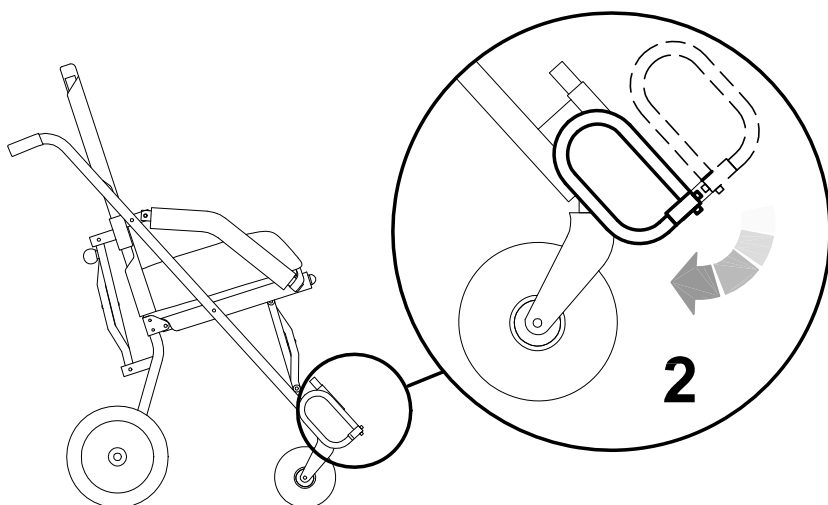
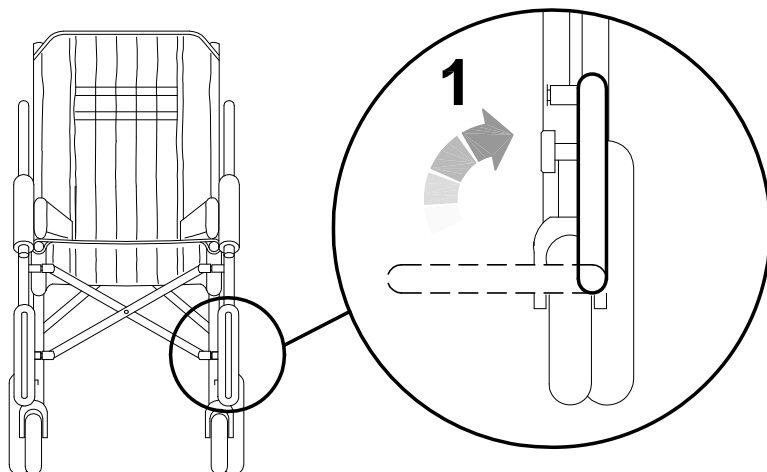


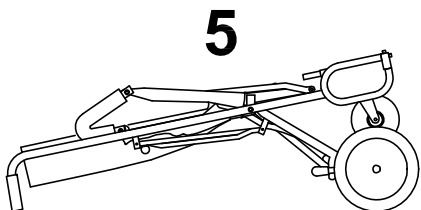
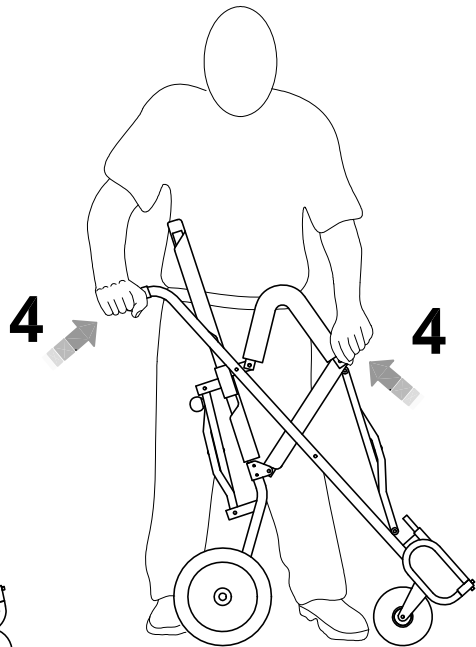
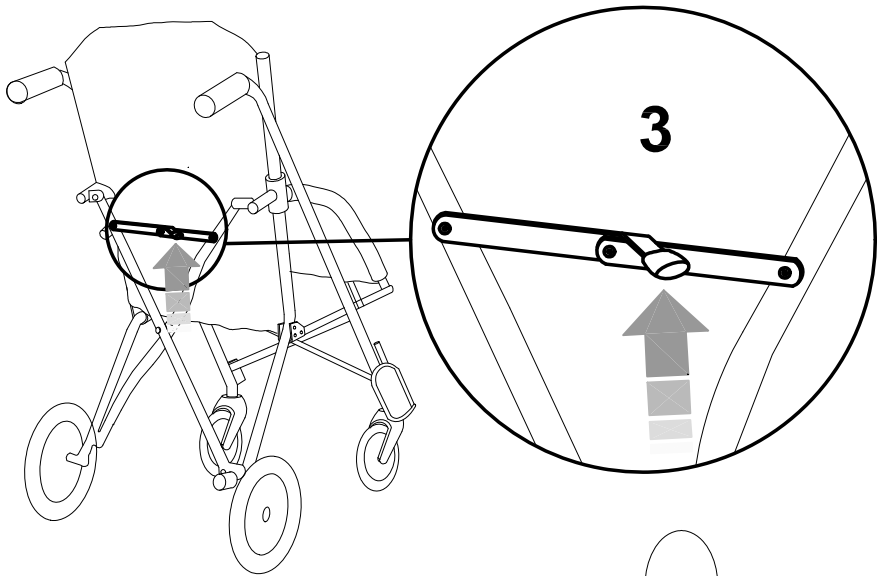


HOW CLIP-4 WORKS AND HOW TO USE IT

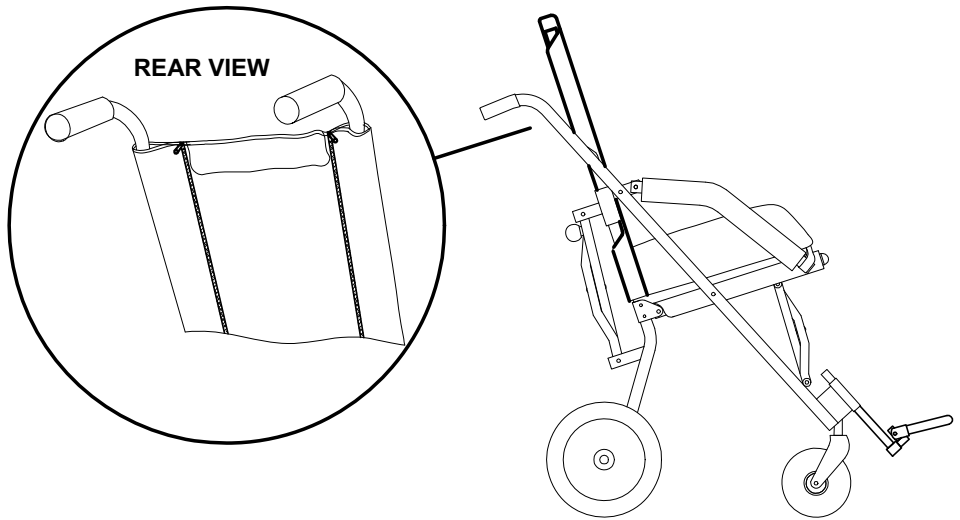
FOLDING the PUSHCHAIR for TRANSPORT

1. 2. TIP UP THE FOOTRESTS
3. UNLOCK THE REAR TENSIONERS
4. FOLD THE PUSHCHAIR

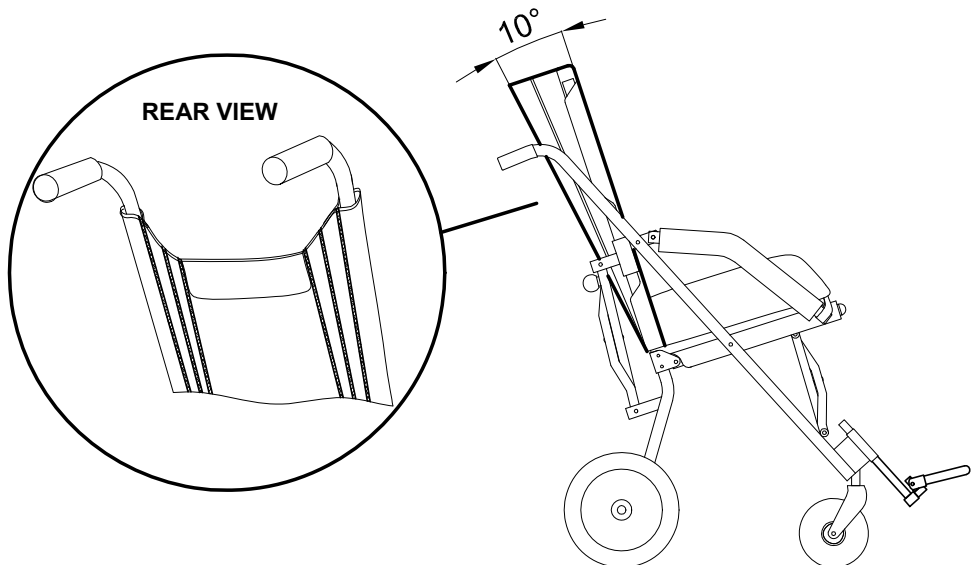




RECLINING THE BACKREST

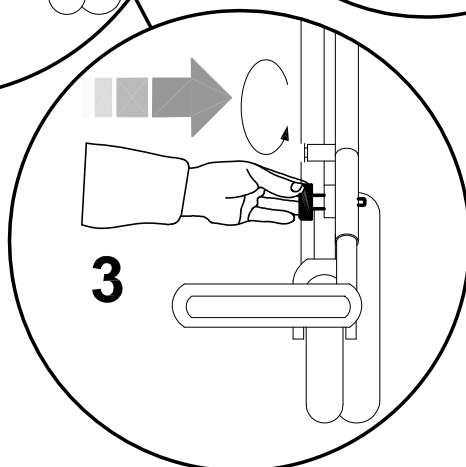
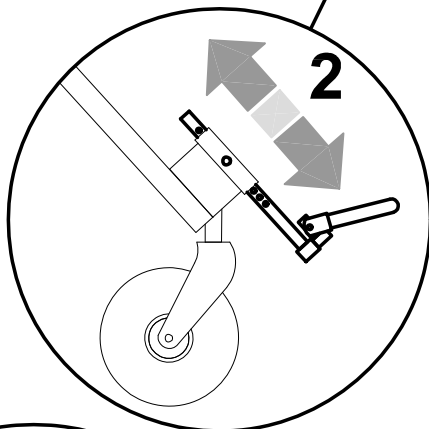
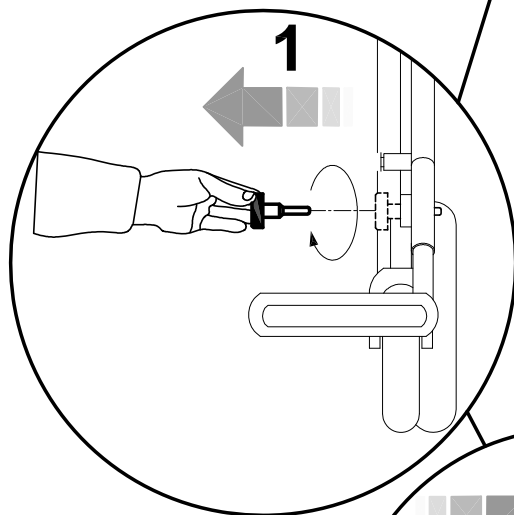
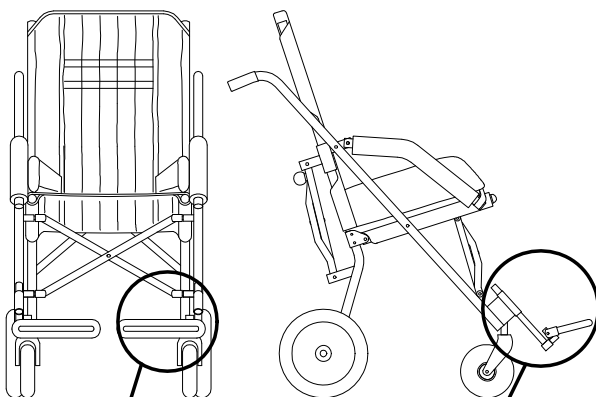


**TO CHANGE THE BACK'S RECLINING POSITION
ADJUST THE RED ZIPPERS ON THE BACKREST**



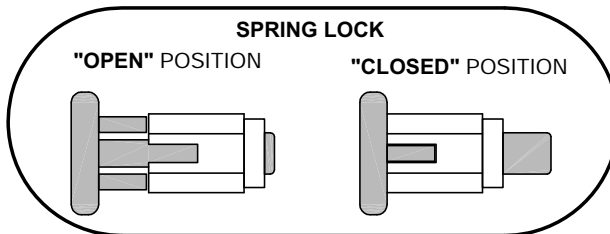
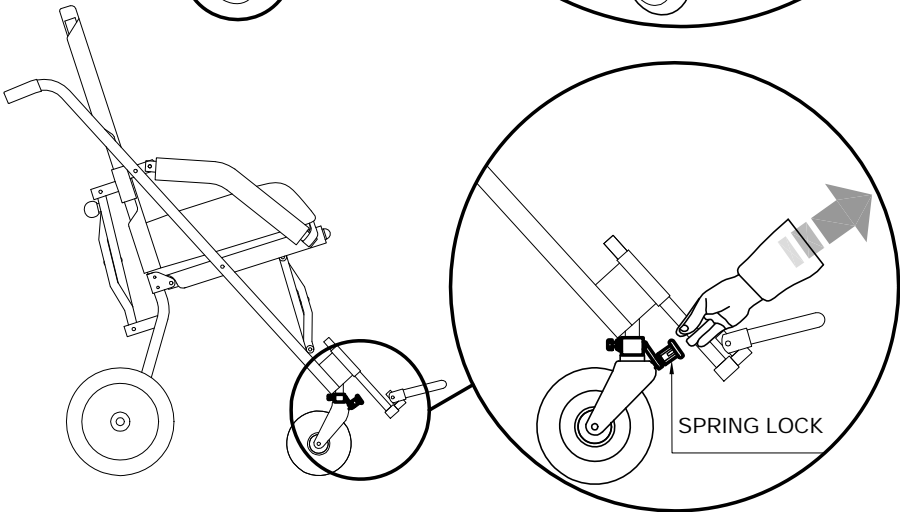
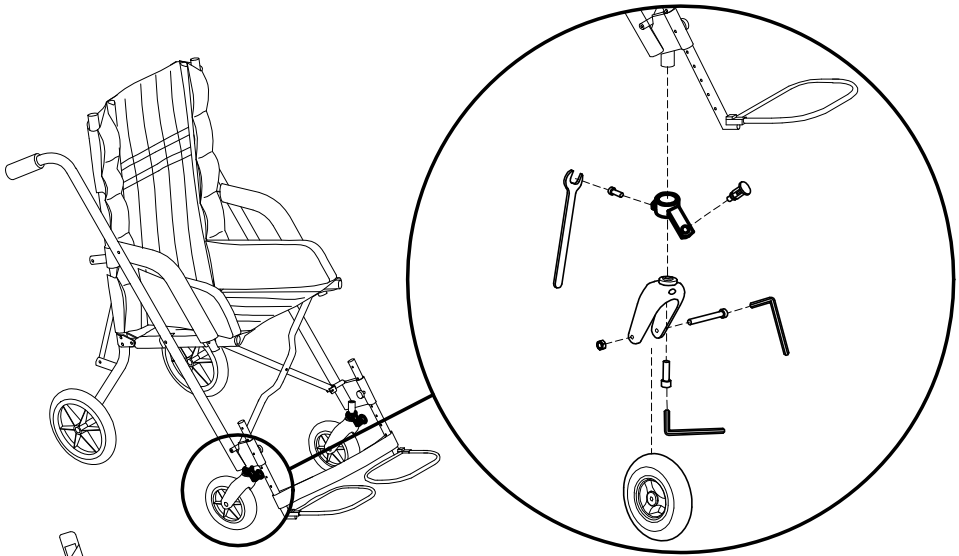
ADJUSTING the HEIGHT of the FOOTRESTS

1. UNSCREW AND TAKE THE TWO BOLTS OFF
2. POSITION THE FOOTRESTS AT THE DESIRED HEIGHT
3. INSERT AND SCREW THE TWO BOLTS

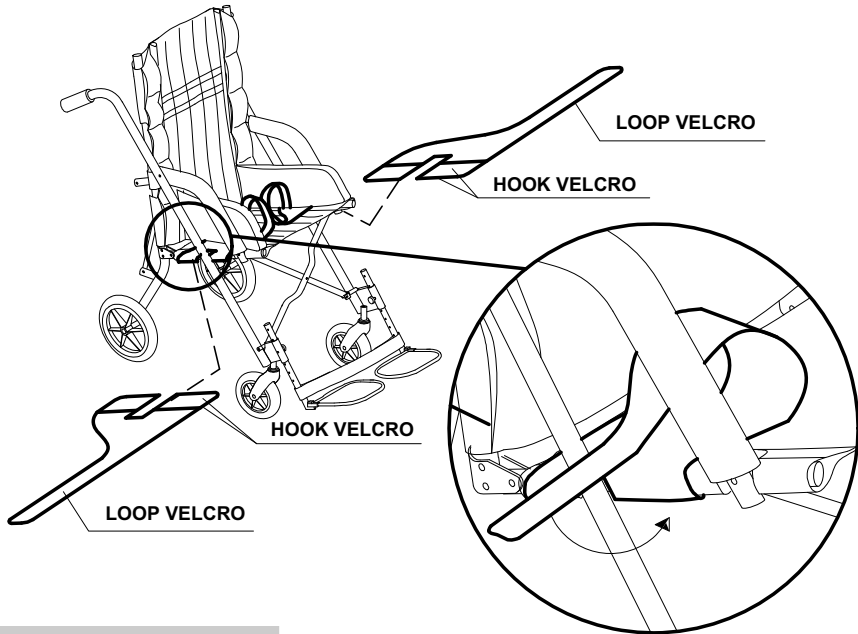


MOUNTING ACCESSORIES

FRONT WHEEL DIRECTION LOCKS 812



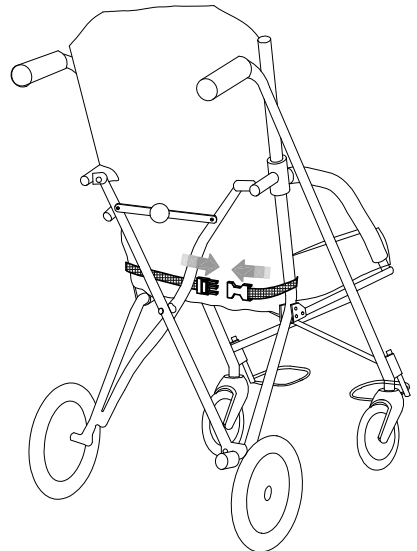
LEG DIVIDING INGUINAL STRAPS 817



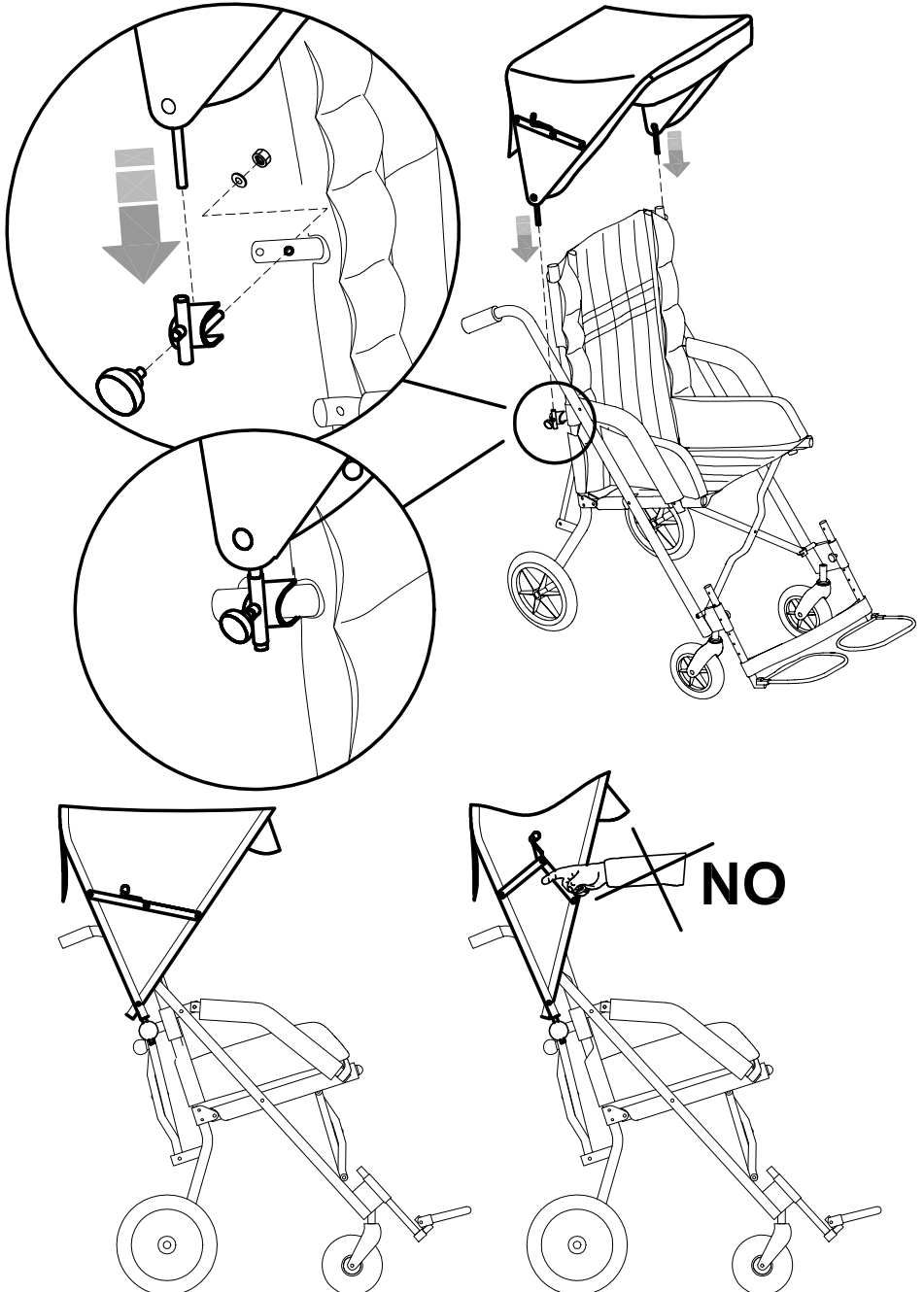
THERMIC COVER 818



VIEW FROM BEHIND



CANOPY 819

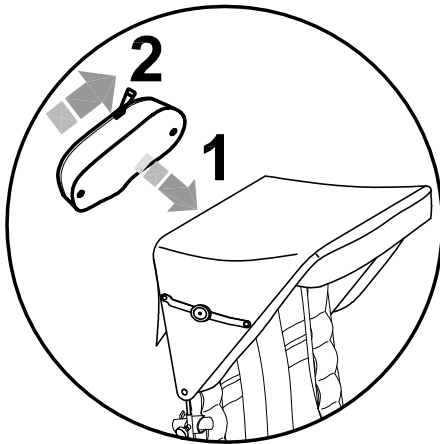


RAIN COVER 825

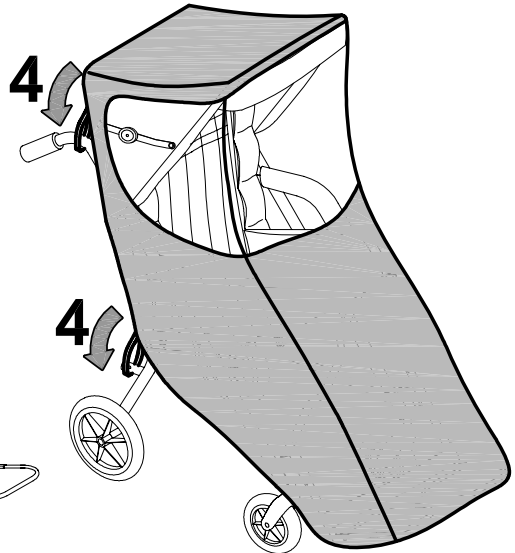
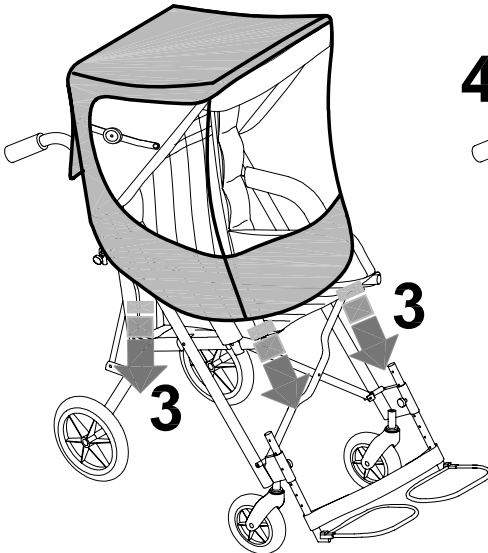
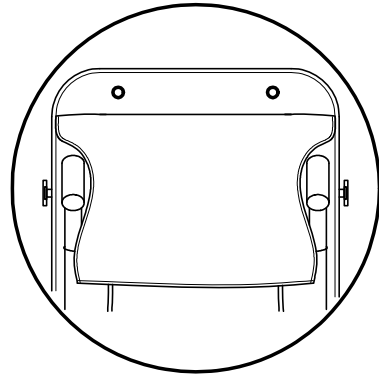


ATTENTION! THE RAIN COVER CAN ONLY BE ATTACHED AFTER THE **CANOPY (819)** IS IN PLACE

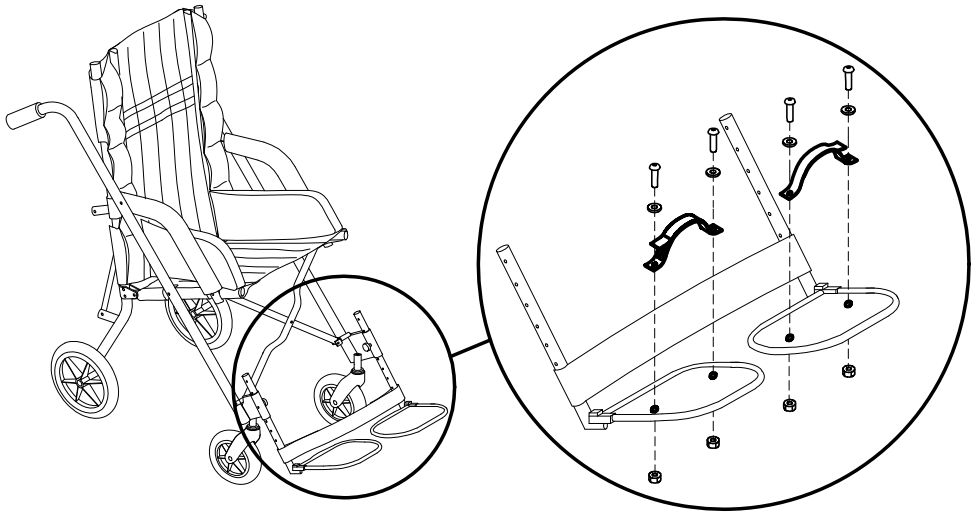
1. ATTACH THE RAIN COVER POUCH WITH THE TWO BUTTONS LOCATED ON THE BACK OF THE CANOPY
2. OPEN THE ZIPPER ON THE POUCH
3. REMOVE THE RAIN COVER FROM THE POUCH AND POSITION IT SO THAT IT COVERS THE PUSHCHAIR
4. ATTACH THE RAIN COVER TO THE FRAME WITH THE STRAPS



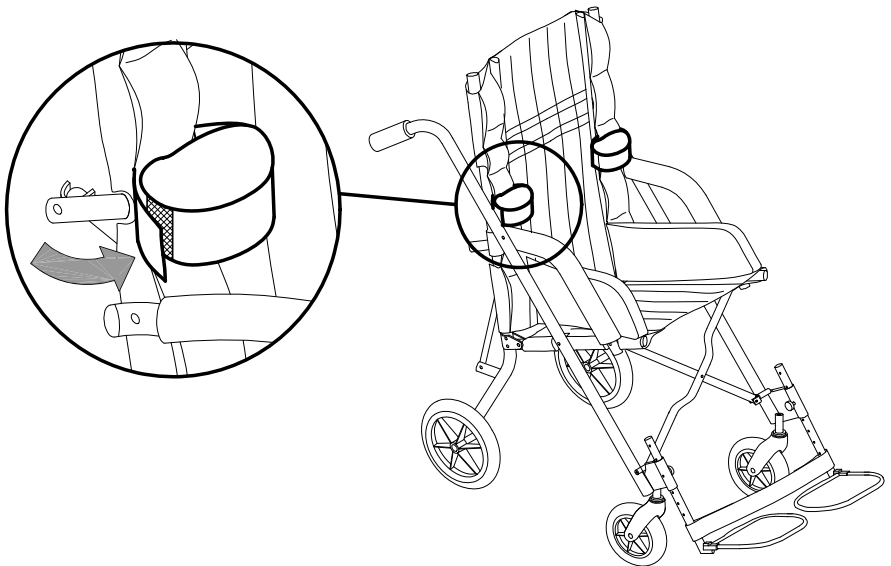
REAR VIEW OF THE CANOPY



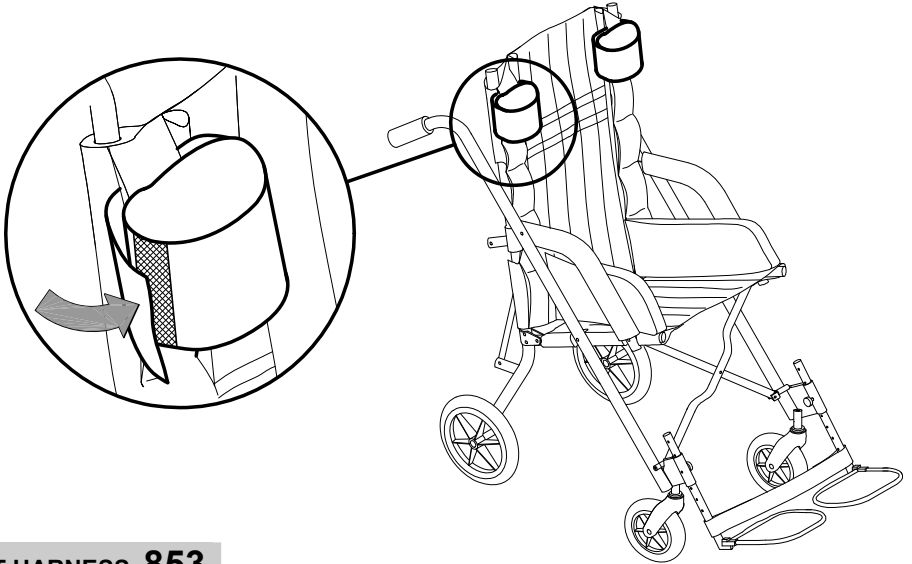
FOOTSTRAPS 827



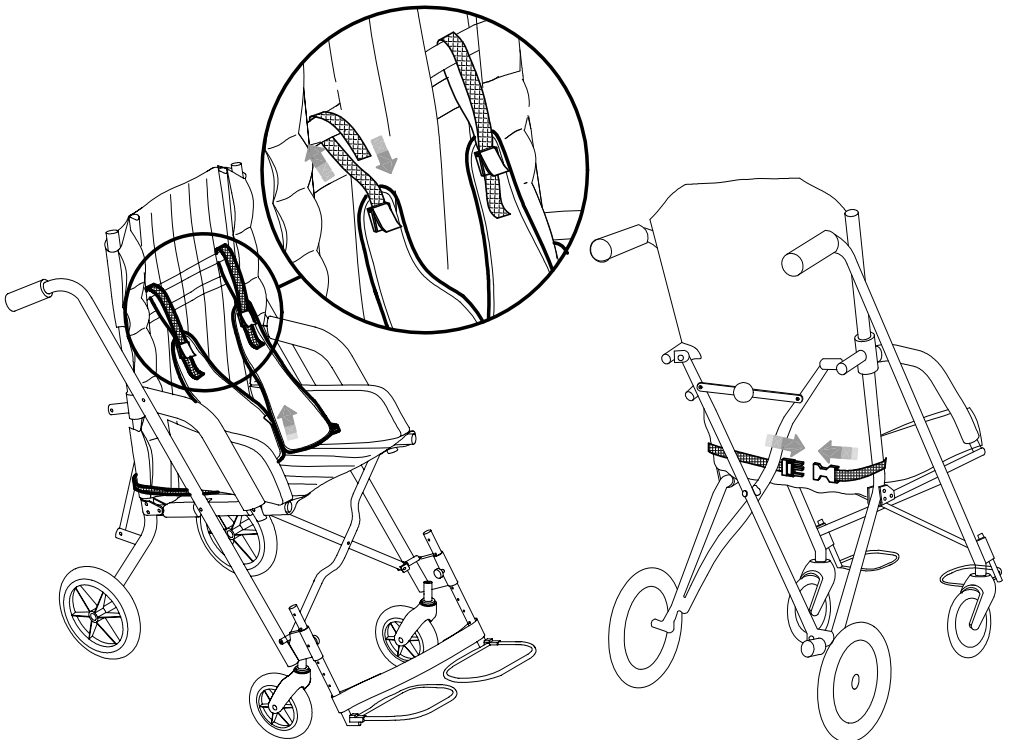
PADDED BODY SIDE SUPPORTS 816



ADJUSTABLE HEAD SIDE SUPPORTS 835

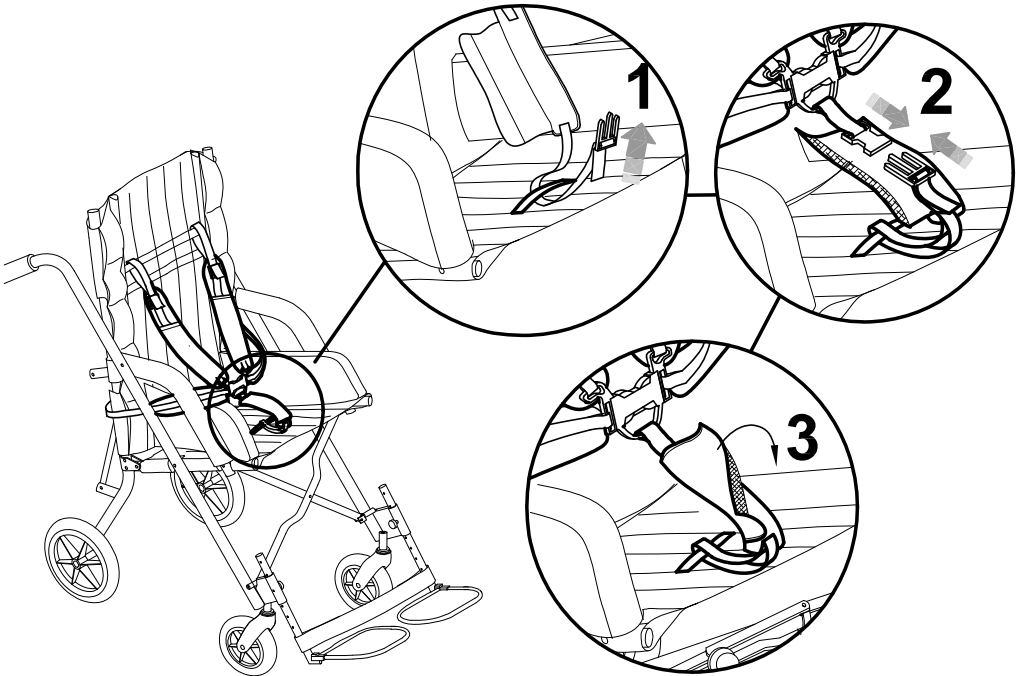


VEST HARNESS 853

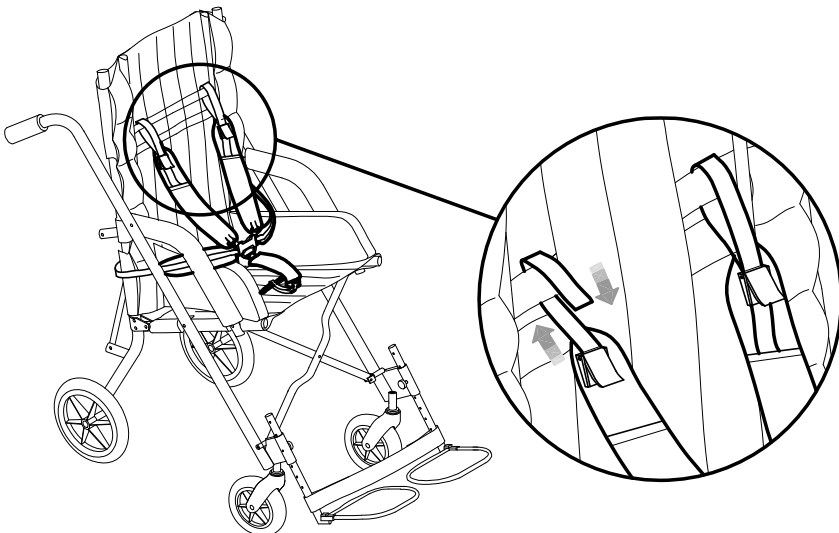


5-POINT HARNESS 906

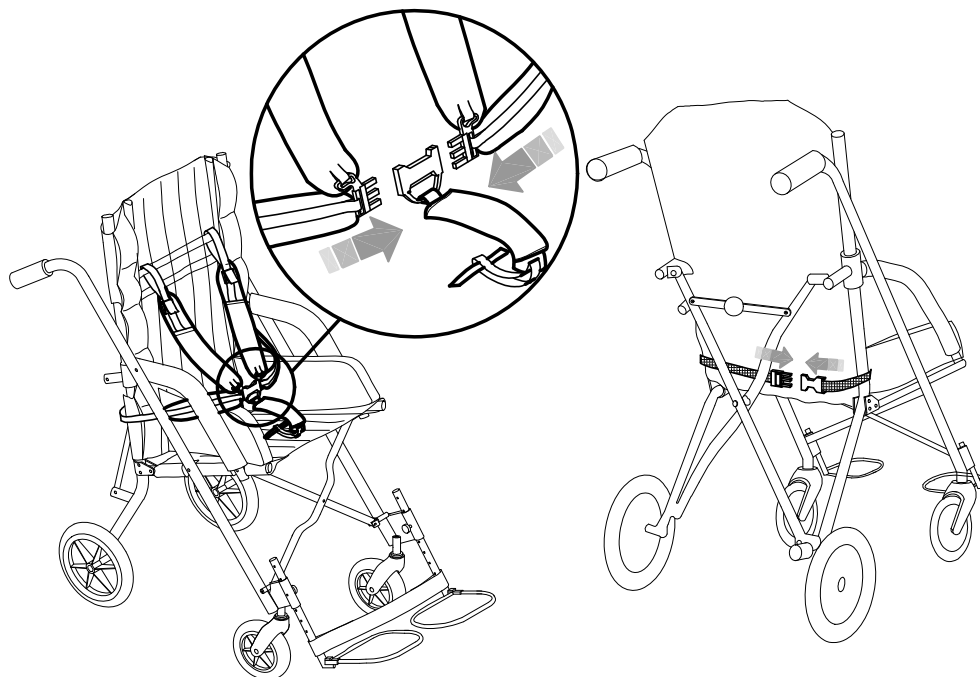
A. FIXING THE STRAP ON THE SEAT



B. FIXING THE STRAPS ON THE UPPER PART OF THE BACKREST



C. FIXING THE FRONT AND THE BACK BUCKLES

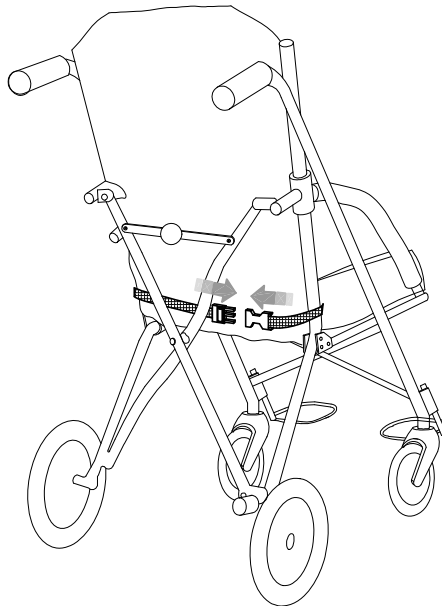
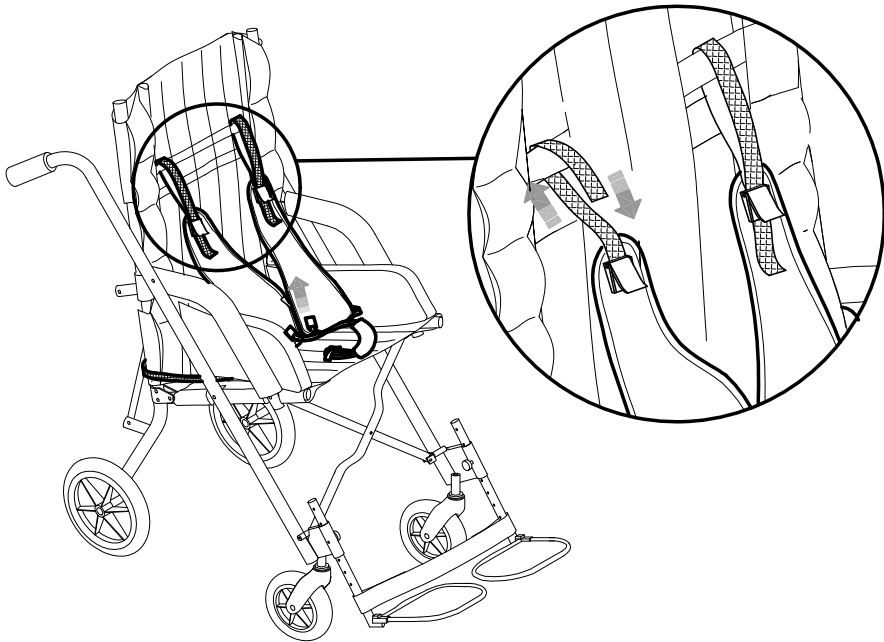


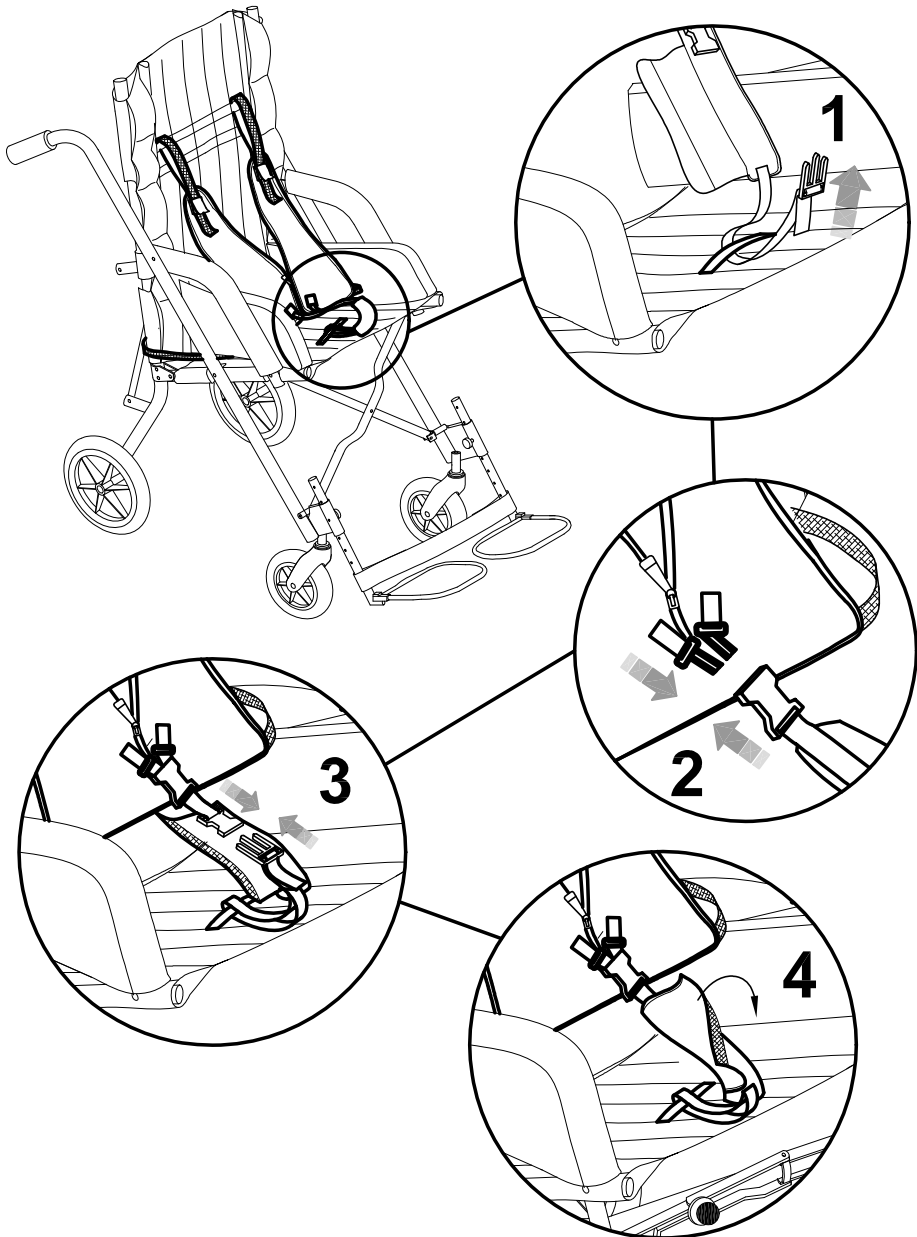
D. HARNESS MOUNTED

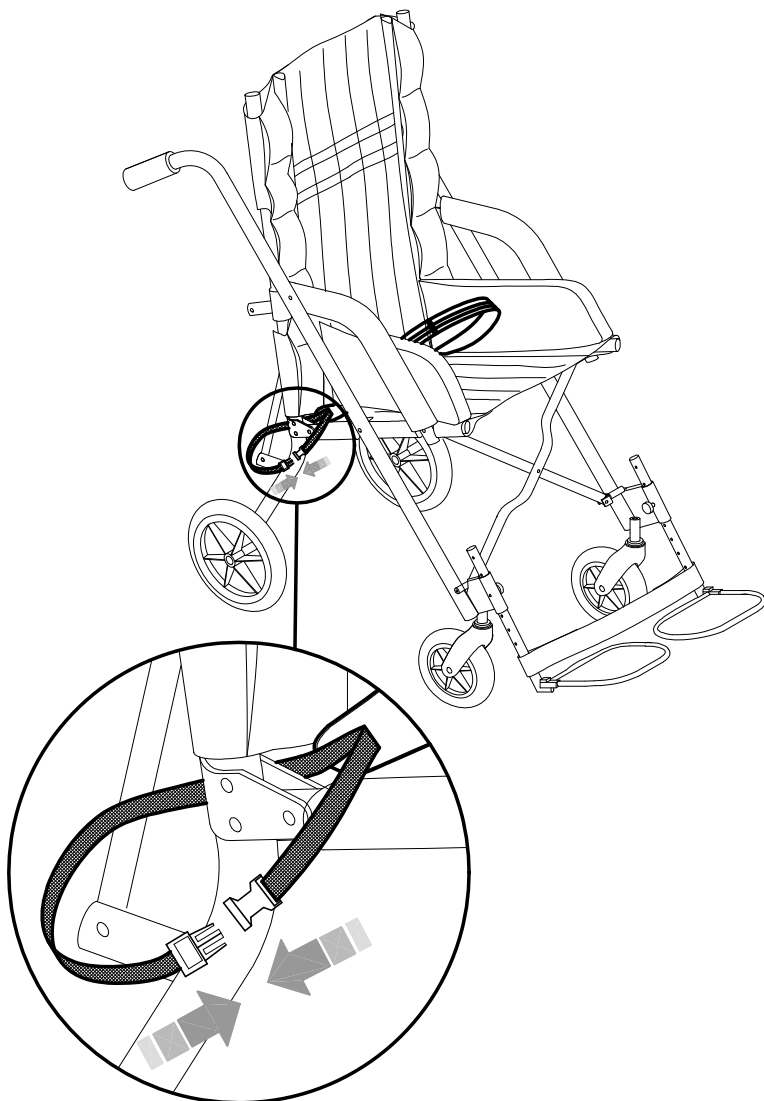


SIZE	circumference min. - max.
4	cm 78- cm 108

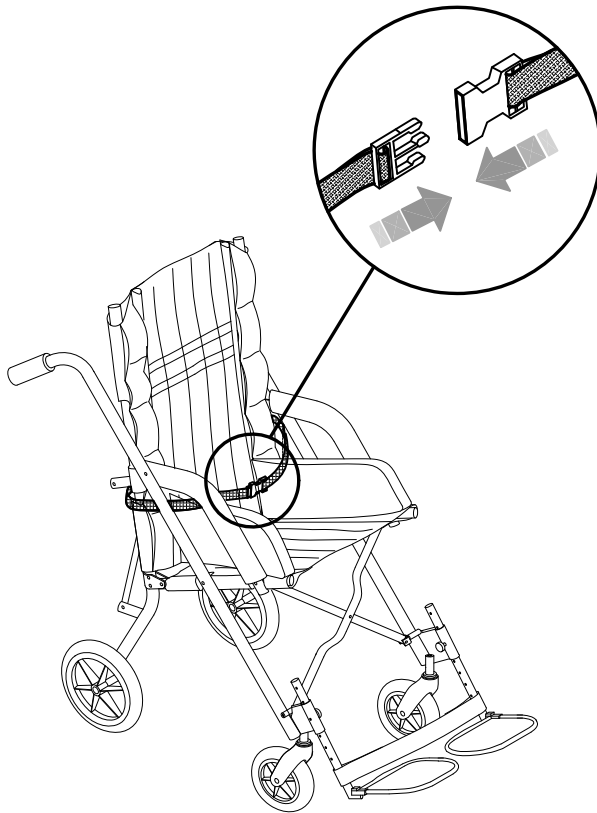
5-POINT VEST HARNESS 903



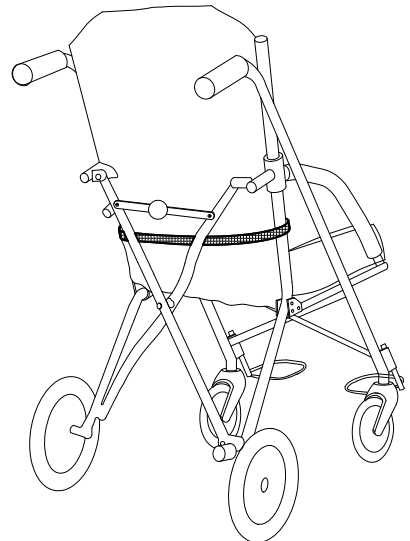




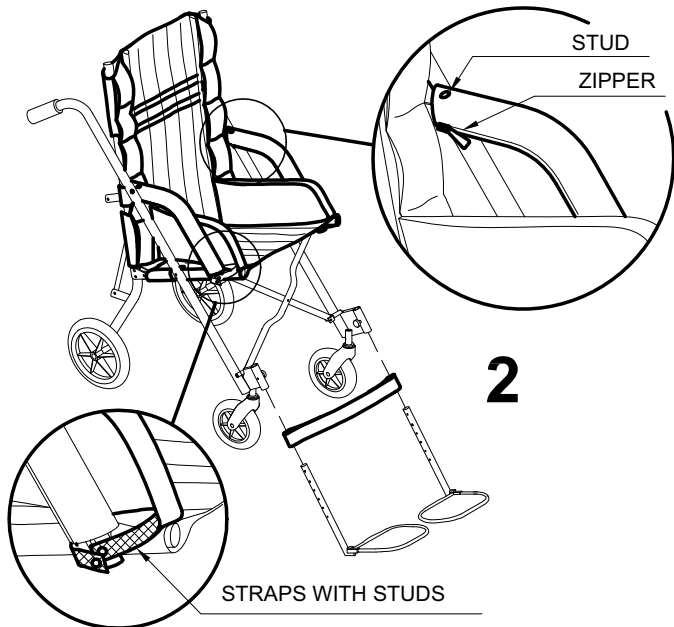
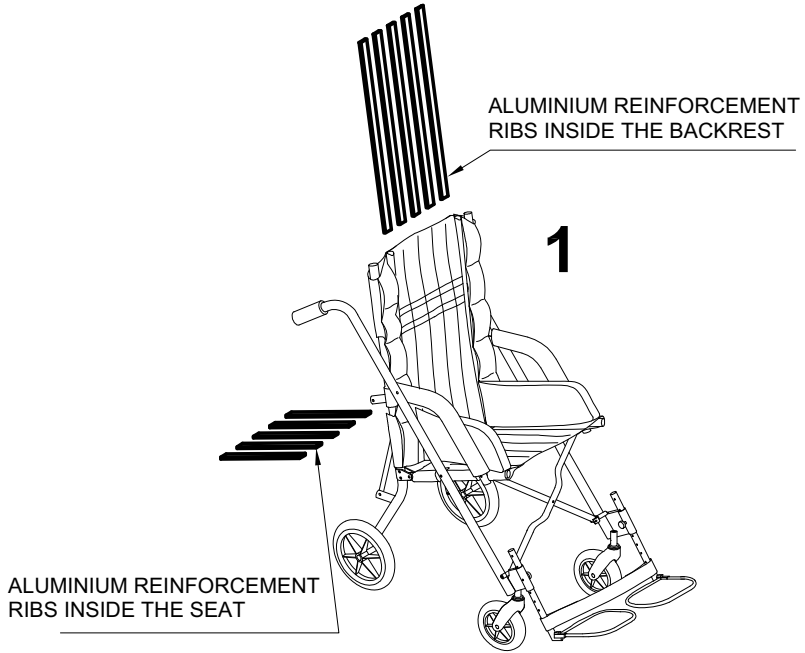
SEAT BELT 828



REAR VIEW

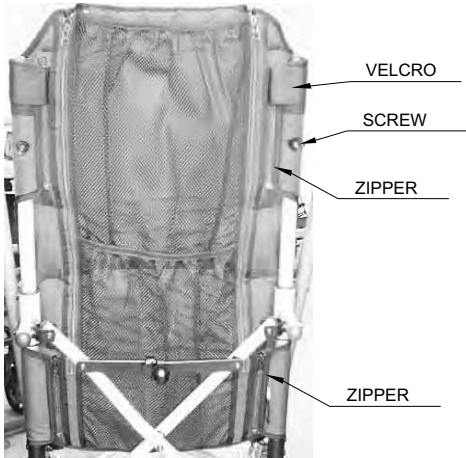


TAKING OFF AND FIXING THE UPHOLSTERY



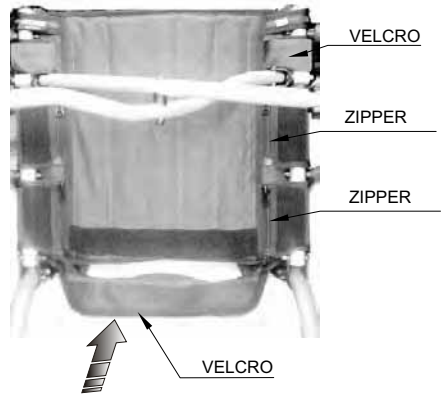
3

REAR VIEW OF
THE BACKREST

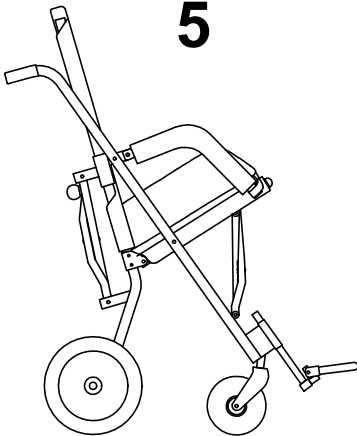


4

VIEW FROM UNDER
THE SEAT



5



WE RECOMMEND TAKING OFF
AND MOUNTING THE BACKREST
CUSHION AND SEAT WITH THE
FRAME IN THE SEMI-OPEN
POSITION



MAINTENANCE, CLEANING AND DISINFECTION

REGULAR (OR PREVENTIVE) MAINTENANCE

REGULAR MAINTENANCE MUST BE PERFORMED ONCE A MONTH. REGULAR MAINTENANCE IS REQUIRED TO KEEP THE PRODUCT WORKING PROPERLY AND SAFELY AND IS ESSENTIAL FOR KEEPING THE CE MARK.

THE MANUFACTURER IS NOT LIABLE FOR THE PERFORMANCE OF THE PRODUCT UNLESS REGULAR MAINTENANCE IS PERFORMED (ATTACHMENT I, DIRECTIVE 2007/47/EC). THE MANUFACTURER ALSO RECOMMENDS THAT YOU HAVE THE SUPPLIER PERFORM A COMPLETE REVIEW OF THE PRODUCT'S OPERATION AND SAFETY WITH THE FOLLOWING FREQUENCIES:

- 1) AT THREE MONTHS FROM PURCHASE;
- 2) AT SIX MONTHS FROM PURCHASE;
- 3) ONCE A YEAR FOR SUBSEQUENT YEARS AFTER THAT OF PURCHASE.

Clean and disinfect the device and its accessories regularly, following the instructions provided below.





CLEANING AND DISINFECTING THE FRAME

Clean and disinfect the painted and chromed parts of the seat and base with a soft cloth dipped in a household detergent and disinfectant, such as alcohol diluted in water.

CLEANING THE UPHOLSTERY

Clean the Canopy (819), the Rain Cover (825), the 45° Belt for the pelvis (894), the Inguinal Belts (817) and the 5-Point Harness (906) with a sponge dampened with water. Carefully follow the instructions below for washing the other upholstery and cushions:

- Carefully remove the upholstery from the pushchair (easier if the pushchair is semi-closed, see page 29-30);
- Slide all the aluminium ribs from out of the pull openings of the backrest and seat;
- Wash following the instructions on the label:

 <p>machine-wash with neutral soap (max. 30° C) do not spin-dry</p>	 <p>do not bleach</p>	 <p>Do not iron</p>	 <p>do not tumble dry</p>
--	--	--	--

- When the upholstery is dry, reinsert the aluminium ribs in the cushion and close the pull openings;
- Remount the upholstery on the pushchair following the instructions on pages 29-30.

CLEANING THE WHEELS

Keep the wheels clean by removing build-ups of dust, hair and anything else that can stick to them

LUBRICATION

The product does not need any special lubrication except if the wheels are not turning freely. In these cases, use a commercial grease spray, paying attention to the warnings on the container.

AFTER LUBRICATION, DRY THE TREATED PARTS WELL TO REMOVE THE RESIDUAL GREASE.



If you notice any INEFFICIENCY, even partial, of the BRAKES, immediately contact the retailer where you purchased the product, which will determine whether they need to be repaired or replaced to avoid dangerous situations that could cause accidents.



Do NOT perform maintenance or replace parts or accessories when the user is sitting on the device.



Intensifie all checks in marine environments, clean more often, anoint the parts exposed to salt corrosion (such as chrome, bolts and screws)

EXTRAORDINARY (OR CORRECTIVE) MAINTENANCE

EXTRAORDINARY MAINTENANCE MEANS ANYTHING DONE TO THE PRODUCT THAT IS NOT MENTIONED ABOVE.

WE RECOMMEND THAT THE USER, RETAILER AND HEALTH FACILITIES ENTRUST ALL EXTRAORDINARY OR CORRECTIVE MAINTENANCE TO THE MANUFACTURER OR OTHER FACTORY-AUTHORIZED SERVICE CENTRE.

ANY OTHER SOLUTION WILL RESULT IN THE USER AND THE THIRD-PARTY MAINTAINER FULLY RESPONSIBLE FOR THE RESULTS OF THEIR WORK AND THE MANUFACTURER WILL ONLY BE LIABLE FOR ORIGINAL DEFECTS OF MATERIALS OR WORKMANSHIP.



If the product is to be disposed of, it must be done according to the law in the country of destination

CUSTOMER SERVICE AND SPARE PARTS

Only contact the retailer where you purchased the product for service and replacement parts.

CONDITIONS FOR DURABILITY, REUSE AND REASSIGNMENT TO A NEW USER

Granted that Ormesa products should be selected, evaluated and ordered for the needs of an individual user, reuse is however possible with the respect the following conditions.

Based on the experience of other similar sold models, on technological progress, on the guarantees of the Quality Management System certificated in 1998 according to ISO 9001, there is adequate confidence that **the average lifespan of the CLIP 4 is about 5 years, on condition that it is used according to the directions given in the user manual.**

Only when the conditions for storage and transport of chapter **HOW TO STORE AND TRANSPORT THE MEDICAL DEVICE** are followed, the periods in which the product is stored at the dealer should not be considered in that time period

Factors unrelated to the product such as the development of the user, its diseases, the use and the surrounding environment can make significantly lower the duration of life of the product; on the contrary, if the indications on the use and maintenance are properly observed, the reliability of the product can extend well beyond the lifetime average above.

Prior to recycling or reassignment an already used Ormesa product, it is required that:

- 1. a doctor or therapist verifies that the aid is appropriate and adequate to meet the dimensional, functional and postural needs of the new user, and if all its components are suitable / appropriate for him. You should also consider that the CE-marking and the manufacturer's responsibility for safety requirements for the product remain only if the original product still has not changed and only original accessories or spare parts have been applied**
- 2. qualified technical personnel of a company specialized in the maintenance of technical aids for disabled people performs a detailed technical inspection to verify its condition and wear, the absence of any damage and failure of all components / adjustments, the presence of the user's manual, of the label with the date and serial number. A copy of the manual and maintenance may be always requested to the retailer that supplied the product or directly to Ormesa**
- 3. The product has been thoroughly cleaned and disinfected following the directions given in the "MAINTENANCE, CLEANING AND DISINFECTION" Chapter**

We recommend you keep written records on all inspections performed on the product before any assignment to the new user.



In case of doubt about the safety of the product or damage to parts or components, you are urged to immediately discontinue use and contact a specialized service center in the maintenance of mechanical aids for disable, or directly ORMESA



Via A. Da Sangallo, 1 Paciana 06034 FOLIGNO PG ITALY

P.I. IT 00574020541 CCIAA Perugia 119215 Iscr. Trib. Perugia 11907 Tel. +39 0742 22927 (r.a.) Fax +39 0742 22637

[http:// www.ormesa.com](http://www.ormesa.com)

E-mail: info@ormesa.com



COMPANY WITH
MANAGEMENT SYSTEM
CERTIFIED BY
= ISO 9001 =
= OHSAS 18001 =



FDA REGISTERED - USA

PRODUCT CERTIFIED BY
CERAH FRANCE

Authorized Dealer

Supplied by:

RMS

Thompson House, Unit 10, Styles Close,
Sittingbourne, Kent ME10 3BF

Tel: 01795 477280

Fax: 01795 229692

Email: sales@rms-kent

Web: inedawheelchair.co.uk

The technical Data and information given in this handbook are not binding. ORMESA reserves the right to carry out any necessary change without prior notice or replacements