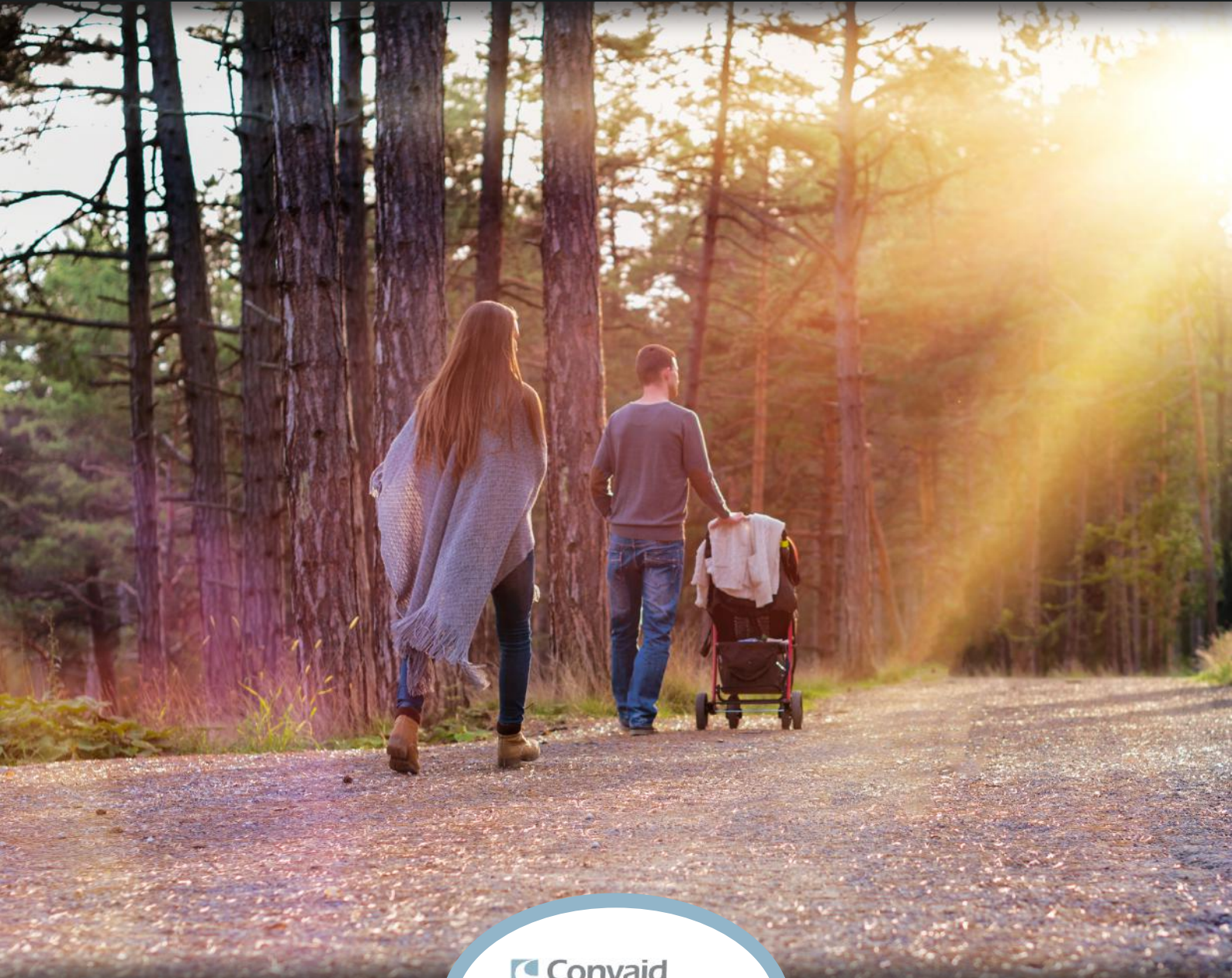


CONVAID --- CRUISER



INNOVATIVE REHABILITATION BUGGY

The Convaid Cruiser is a rehabilitation buggy for children requiring mild to medium levels of postural support. The Cruiser features a fixed tilt for improved postural control and a self tensioning seat for increased sitting tolerance.

The durable, stylish and convenient Cruiser is the perfect solution for an adventurous family, folding easily for when out and about.

The buggy comes complete with a 2-point padded pelvic belt; plus extendable backrest and seat depth giving this buggy up to five years of growth.



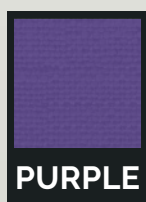
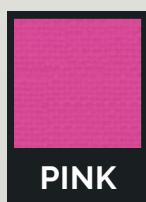
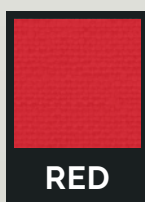
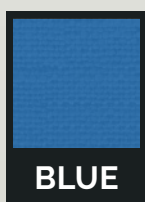
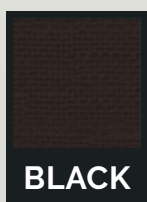
KEY FEATURES

- > Available in six sizes
- > Crash tested (ISO7176-19) and easy to fold for transportation
- > Customisable growth capabilities
- > Removable, washable covers available in various colours
- > Lumbar and thoracic adjustment
- > Comes with 2-point padded belt

THE UNIQUE SELF-TENSIO® SEATING SYSTEM

The Convaid Cruiser features a unique self-tensioning seating system which provides therapeutic pelvic positioning similar to a solid rehab chair - but all in a folding buggy. Once the user is removed, the Cruiser folds easily into a compact and lightweight package that can be easily placed into the boot of a vehicle.

CHOOSE YOUR OWN COLOUR



A WIDE RANGE OF PARTS & ACCESSORIES



SUN CANOPY



RAIN COVER



HAND BRAKES



HEADRESTS



HEADWINGS



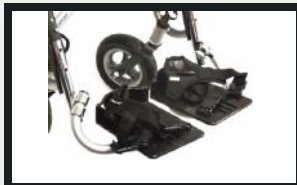
HARNESSES



LATERALS



LEG SUPPORT



FOOTPLATES



ANTI-TIP



STORAGE



TRAVEL BAG

CRUISER DIMENSIONS AND SPECIFICATIONS

MEASUREMENTS IN CM	CX10	CX12	CX14	CX16	CX18
SEAT WIDTH	25	30	35	40	45
SEAT DEPTH	15 to 28	20 to 33	25 to 38	28 to 41	36 to 53
SEAT BACK HEIGHT	53	56	64	71	64
SEAT TO FOOTPLATE	13 to 53	13 to 63	10 to 56	10 to 57	20 to 58
SEAT TO FLOOR	58	63	53	58	66
SEAT TO BACK ANGLE	85°/90°/95°	85°/90°/95°	85°/90°/95°	85°/90°/95°	85°/90°/95°
SEAT ANGLE	30°	30°	30°	30°	30°
SHOULDER STRAP HEIGHT	28 to 48	30 to 51	38 to 58	43 to 63	41 to 56
HEADREST EXTENSION	15	20	20	20	25
OVERALL SIZE (W x L x H)	56 x 122 x 94	60 x 112 x 97	65 x 124 x 94	70 x 132 x 102	72 x 140 x 97
FOLDED SIZE (W x L x H)	38 x 119 x 43	38 x 122 x 43	41 x 119 x 43	135 x 43 x 20	127 x 43 x 25
WEIGHT OF CHAIR	12 kg	12 kg	13 kg	14 kg	14 kg
WEIGHT CAPACITY	30 kg	30 kg	46 kg	77 kg	77 kg



Thompson House, Unit 10, Styles Close,
Sittingbourne, Kent, ME10 3BF.

Tel: +44 (0) 1795 477280

Fax: +44 (0) 1795 229692

Email: sales@rms-rehab.co.uk

www.rms-rehab.co.uk

